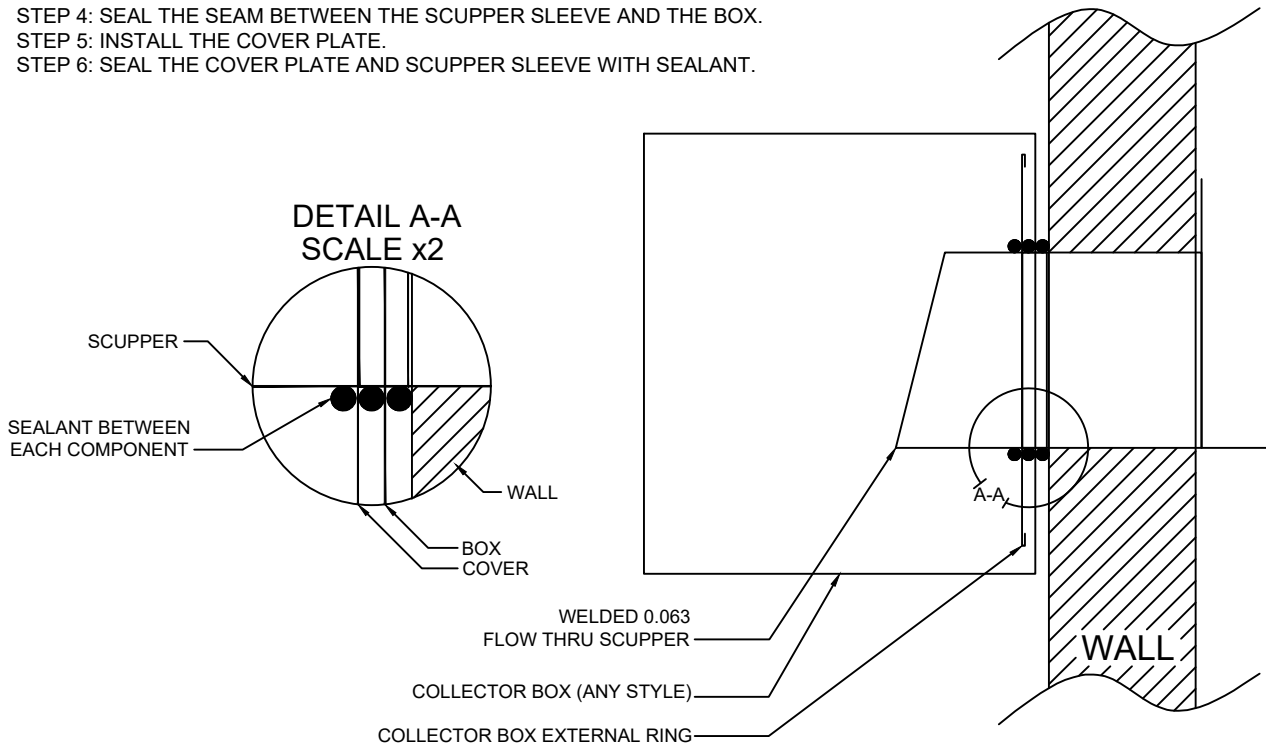


SCUPPER INSTALLATION



- STEP 1: INSTALL FLOW THROUGH SCUPPER.
- STEP 2: APPLY A CONTINUOUS BEAD OF SEALANT AROUND SCUPPER ON OUTSIDE FACE OF WALL.
- STEP 3: INSTALL THE COLLECTOR BOX.
- STEP 4: SEAL THE SEAM BETWEEN THE SCUPPER SLEEVE AND THE BOX.
- STEP 5: INSTALL THE COVER PLATE.
- STEP 6: SEAL THE COVER PLATE AND SCUPPER SLEEVE WITH SEALANT.



MATERIAL (please choose one):

- | | |
|--------------------------------------|--|
| <input type="checkbox"/> 24 GA Steel | <input type="checkbox"/> .032 Aluminum |
| <input type="checkbox"/> 22 GA Steel | <input type="checkbox"/> .040 Aluminum |

Other: _____
 Color: _____
 Finish: _____

QUANTITIES:

_____ Quantity

Miter/End Cap additional information:
 See the attached sheets for miters and end cap

24 ga colors for immediate ship:
 1) Regal White
 2) Medium Bronze
 3) Dark Bronze
 Other colors available upon request.

Sheet ___ of ___

DWG# 770-012

Notes:

- 1) Written approval is required prior to fabrication, contractor is responsible for all dimensions and quantities. Fabricated items are not returnable.
- 2) Straps are to be installed at 24" O/C.
- 3) Expansion joints and slip joints are available.
- 4) Miters are 12" long, per side (inside and outside).

Project Name: _____

Installing Contractor: _____

Contact Name: _____

Contact number: _____

Signed Approval: _____

Temple Architectural Products
 1111 Lowell St.
 Elyria, Ohio 44035

(440) 323-9393
 Estimates@templearchitecturalproducts.com
 www.templearchitecturalproducts.com